

McGilvra City Homes

Level Three

Luxury Master Bedroom Suite

- Fireplace with Crème Marfil marble surround and gas log set
- Vaulted tray ceiling
- In wall flush speakers
- Walk in closet with \$2,000 California Closet Allowance

Master Bath

- Soaking tub
- Large custom tiled shower with 3/8" frameless glass door
- In wall flush speakers
- Double under mount sinks with Crème Marfil vanity countertop
- Jerusalem Gold marble floors with in-floor heat

Office

- Custom cabinets
- Hardwood Floors

Laundry

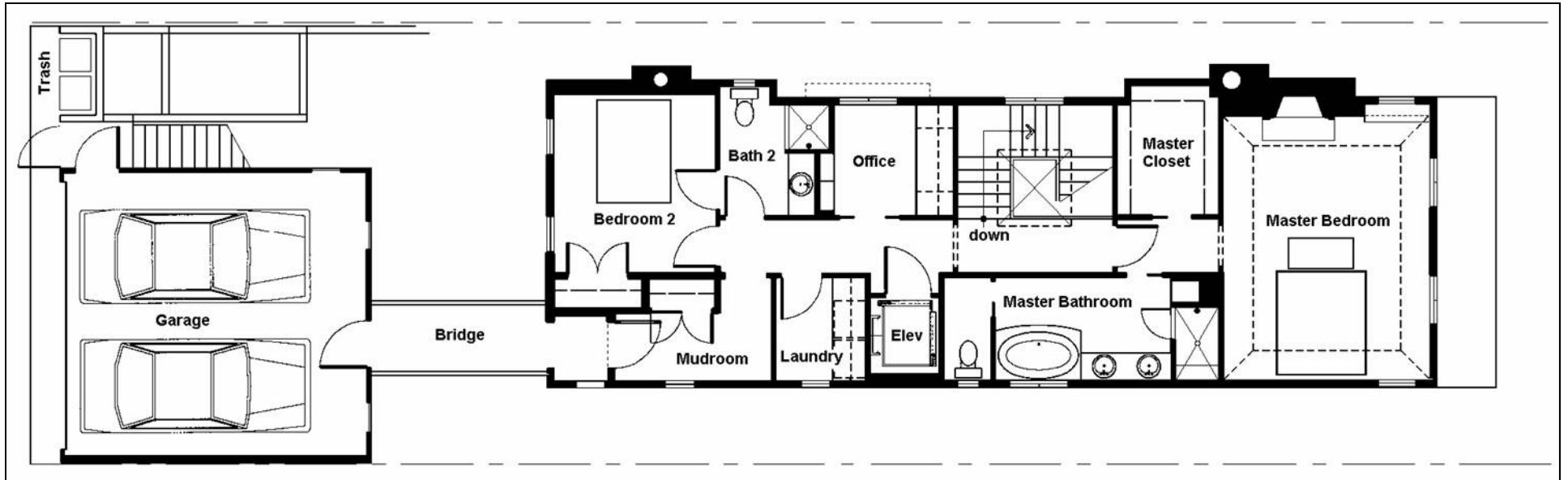
- Custom cabinets
- GE front load washer and dryer
- Marmoleum floors

Garage

- Armed, detached two-car garage
- ADA accessibility to residence
- Concrete Floor
- Programmable heater

McGilvra City Homes

Level Three Floor Plan



Floor Area: 1,218 Square Feet
Garage: 424 Square Feet

Dimensions:

Master Bed	14'	x	18'
Master Closet	7'	x	8.5'
Office	8'	x	7.5'
Laundry	6'	x	7'
Bedroom No. 2	11'	x	12'